



**AD** **ADVANCED**  
DIAGNOSTICS™



**SMART** Pro



# Smart Pro

**The easiest to use vehicle key programmer with the widest vehicle coverage.**

Smart Pro is the easy-to-use device for safely and reliably programming transponder keys, proximity keys and remotes and for reading PIN codes for the broadest range of car makes worldwide. It features an intuitive touch screen user interface and incorporates the entire Advanced Diagnostics database of over 5000 vehicle models.

## Smart Pro: Smart Choice

### Fully geared and ready to operate

Smart Pro comes supplied in a hard body carry case together with all the necessary cables and connectors to start working immediately. The case includes: Smart Pro device (AD2000B), mains cable (ADC2009), OBD cable (ADC2000), AC/DC power supply unit (ADC2006), USB cable (ADC2004), 50 way to 25 way converter (ADC2001), pin saver (ADC2002), USB flash drive operating manual, printed quick start guide.



### Tailored purchase options

You can buy annual or monthly UTP packs to get complete coverage of all the available Advanced Diagnostics software, top up with tokens or purchase individual software kits.

#### ✔ Unlimited Token Plans

UTP Subscriptions

24-hour UTP Packs

#### ✔ Pay Per Use

Buy Tokens

#### ✔ Purchase Software

Individual Software Modules

Software Kits

### Easy to use software

Smart Pro features a 10-inch, HD colour touch screen guiding the user through a simple step-by-step sequence for all the key programming functions and procedures. The software is available in multiple languages with easy-to-read icons to indicate whether Smart Pro is successfully communicating with the vehicle or not.

Guided procedures, photos and hints and tips by vehicle all help make Smart Pro the easiest to use vehicle key programmer.

### Safe and secure programming procedures

All software routines are developed by Advanced Diagnostics and run through proprietary servers to ensure security and continuity of service.

### New software releases and FREE software updates

To ensure that Smart Pro always delivers the broadest possible coverage, new software releases and software updates are ongoing. Check out Silca News monthly for the new vehicles available with a free Smart Pro update.

### Integrated, expanded functionality

Smart Pro features an expansion port and slot to host the Smart Aerial and the Mercedes Smart Programmer to broaden the range of functionality to preset transponders and duplicate Mercedes infrared slot keys.



Expansion port and slot for Smart Aerial+ and the Smart Mercedes Programmer

Smart Pro is protected by an advanced, integrated security system meaning no other dongles or smartcards are required.

### Flexible use

Smart Pro is an all-in-one solution offering the choice of a combination of purchase options. You can opt from a choice of various UTP (Unlimited Token Plan) packs, pay-as-you-go tokens or you can simply purchase the software modules you use most. You can also change from one system to another according to the evolution of your business.

### Complete solution.

Smart Pro is fully compatible with the entire range of Silca transponders and vehicle keys and forms part of the unique Silca/Advanced Diagnostic 360° vehicle key duplication offer including advanced key cutting machines, key blades and market leading digital support tools like MYKEYS Pro.

### Quality

Smart Pro is supplied in a hard body carry case with internal rubber shaped slots for putting all the tools necessary to program keys and remotes. The screen is made of gorilla glass, a resistant and long-lasting material. Smart Pro is backed by a comprehensive 2-year warranty\*\* and the Advanced Diagnostics/Silca after sales support team.

### Long stand-alone use

Power is supplied to Smart Pro via the OBD port, mains cable or an internal battery that gives two hours of stand-alone use.

### Fast programming procedures

The powerful quad core processor, new hardware and software architecture are designed to save you time. By integrating key programming and PIN reading functions for most makes into one step, the programming process is significantly faster.

\*\* excluding battery

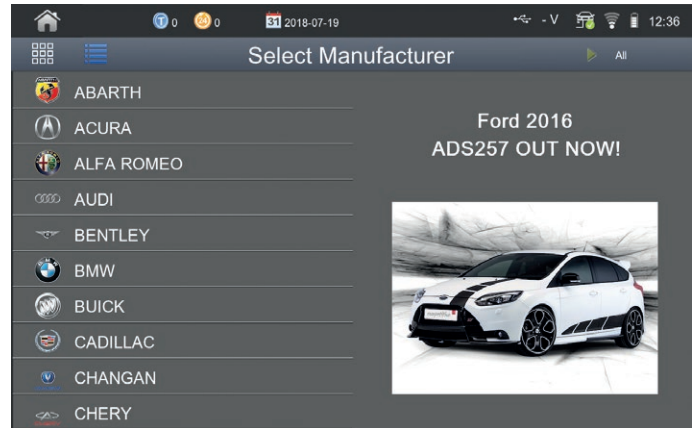
## All information in one place thanks to the integration with MYKEYS Pro

All the information needed to program a key is collected in one place, always updated and immediately available. Smart Pro is fully integrated with MYKEYS Pro, a constantly updated digital tool containing over 5000 vehicle model details with information such as vehicle OBD port location, key photos, VIN and engine codes, videos and even programming tips from experts to ensure a smooth key programming process.



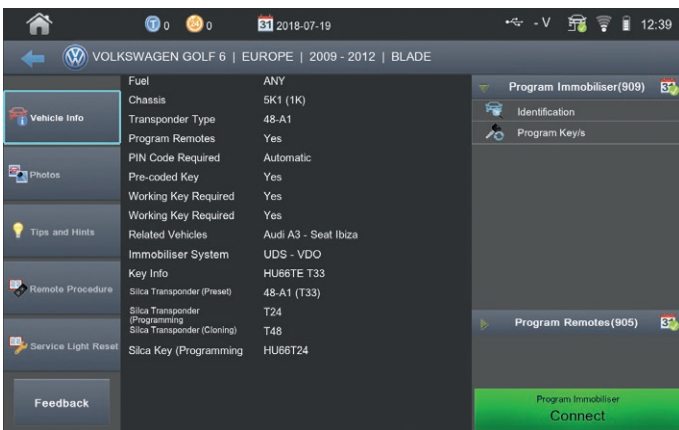
### MYKEYS Pro

MYKEYS Pro is the essential support tool to deliver a professional automotive key duplication service. A dedicated Vehicle Key Guide is the most complete tool available on the market to confirm if a vehicle key can be duplicated and give the right procedures and parts needed whatever the make and model. Smart Pro can even be set directly from MYKEYS Pro.



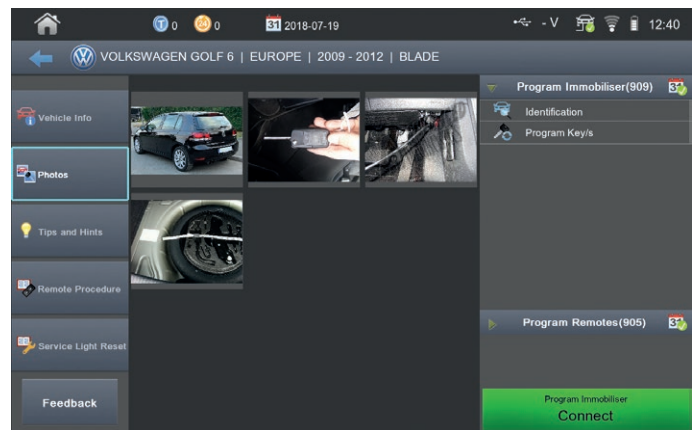
### Select Manufacturer

Select vehicle via the familiar icons in either list or grid form. Vehicles can be filtered by region for easy access to the models most relevant for your market. The search can then be made by vehicle (model, year) or by immobilizer system.



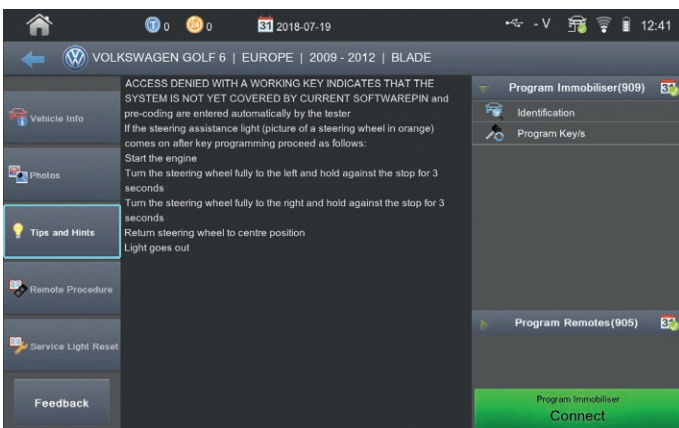
### Vehicle Info

A simple grid provides all the information to identify the vehicle you want to program, including VIN number, transponder type, immobiliser system, Silca transponder and key reference.



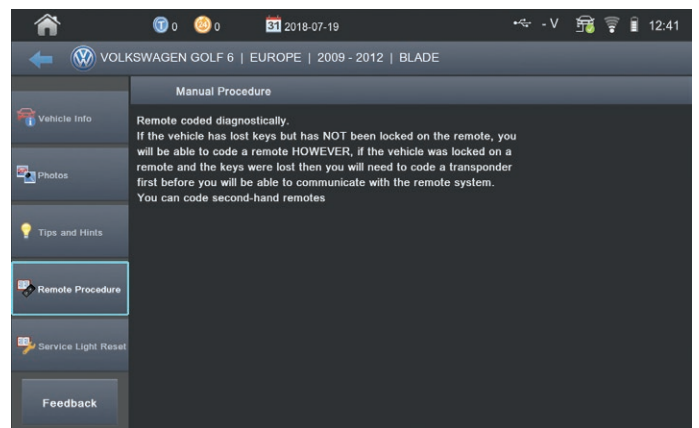
### Photos

The software includes photos to help identify the vehicle of interest, show where the OBD port is located, and what types of keys and remotes are available.



### Tips and Hints

Advanced Diagnostics expertise at your fingertips; this section provides advice and suggestions for carrying out all the programming procedures in a more streamlined way.



### Remote Programming Procedure

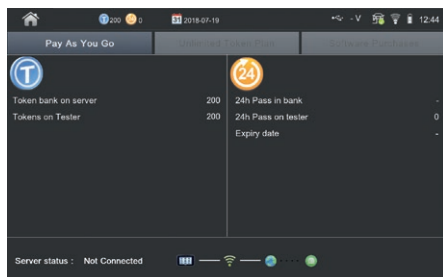
This function illustrates the steps to follow for programming the remote. All the procedures have been carefully tested by Advanced Diagnostics for accurate results. The procedures are icon driven and intuitive.



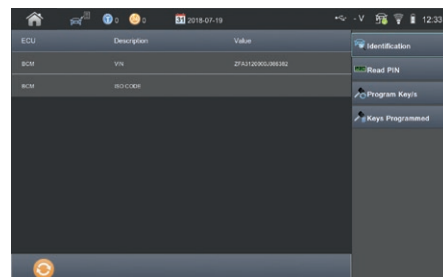
## Other software functions



Part Number	Name	Current Version	Available Version	Status	More info
ADS100	Ford	1.1.5	1.1.6	<input checked="" type="checkbox"/>	<i>i</i>
ADS143	BMW	1.0.1	1.0.1	<input type="checkbox"/>	<i>i</i>
ADS183	BMW/CAS	1.0.1	1.0.1	<input type="checkbox"/>	<i>i</i>
ADS113	Chrysler	1.0.5	1.0.5	<input type="checkbox"/>	<i>i</i>
ADS173	Chrysler-CAN2010	1.0.6	1.0.6	<input type="checkbox"/>	<i>i</i>
ADS196	Chrysler-CAN8	1.0.1	1.0.2	<input checked="" type="checkbox"/>	<i>i</i>
ADS156	Chrysler/Imm	1.0.2	1.0.2	<input type="checkbox"/>	<i>i</i>
ADS141	Chrysler/Pe	1.0.1	1.0.1	<input type="checkbox"/>	<i>i</i>



Token bank on server	24h Pass in bank
200	24h Pass on tester
0	Expiry date



ECU	Description	Value	Identification
BCM	VIN	ZFAJ120000000000	<i>i</i> Read PIN
BCM	ECU CODE		<i>i</i> Program Keys
			<i>i</i> Keys Programmed

### Guided updating procedure

Smart Pro can be updated via Wi-Fi with step-by-step guided procedures or via PC using the USB cable supplied. When updates are available a notification will appear, while a tick in the status column identifies the modules requiring an update.

### My Smart Pro and archive

The My Smart Pro section helps keep an eye on token credits, currently active UTP plans, expiry dates, and purchased software modules. Customized data archives and favourites give easy access to the most frequently used programming procedures.

### Electronic on-board diagnostics

The EOBD functions help you read and clear faults not related to the immobiliser. When a fault is detected, the software shows its identification code and description so you can always make sure the key or remote has been programmed correctly.

## Transponder precoding



### Optimized transponder management

Smart Pro incorporates transponder identification and precoding functions for a more streamlined process. Just connect Smart Aerial+ to the device and follow the instructions.

## Duplicate Mercedes\* keys

The Smart Pro Mercedes\* Solution is the fast, reliable way to programme slot keys compatible with Mercedes\* models produced from 1996 to 2014. It requires the combined use of the Smart Programmer device, the dedicated Mercedes\* software module ADS2298, the Silca slot key HU106S23 and the SmartPro.

### Password retrieval at no cost

The password needed to complete the programming procedure is calculated in the background by the proprietary Advanced Diagnostics server. Its retrieval requires no additional costs or tokens.

### No tokens needed

The Mercedes\* Solution is always available to customers purchasing the Smart Programmer. No additional tokens are required.

### Quality replacement key

The Silca HU106S23 key is a quality, CE-approved replacement slot key in the familiar Mercedes\* form. The key is rewritable and multi-frequency.

### CE-approved equipment

All the equipment is manufactured in compliance with CE standards whilst the servers used for calculations are proprietary to Advanced Diagnostics.



## Expansion ports and function buttons



## LED light indicators


Smart Pro features three led lights indicating:

- GREEN light, slow flashing: the device is on
- GREEN light, fast flashing: device is working
- RED light, single flashing: battery low
- RED light, fixed flashing for longer than 10 seconds: hardware error, contact distributor
- YELLOW light, fixed: battery fully charged
- YELLOW light, flashing: battery charging

Please note that if the green light doesn't switch on and the red light turns on briefly, it means that the battery is fully out of power and must be charged with the AC/DC feeder.

We recommend that you charge your device periodically to avoid interruptions or malfunctions while programming.

## Technical Data

Power supply	120V-230V - 50/60Hz, mains adapter included
Battery	embedded 3.65V 5.3Ah rechargeable lithium ion (Li-Ion) battery (not be tampered with by the user) - user-replaceable 14.4V 3.2Ah lithium-ion (Li-Ion) battery sufficient for 2 hours stand-alone use, chargeable via mains
Processor	quad core ARM®
Memory	2GB RAM
Storage	32GB SSD
Vehicle support	12V (cars) - 24V (trucks)
Screen	10.1", 1280 x 800 pixel, colour LCD, PCAP touch panel
External ports	type A and B USB ports, Smart Aerial port and slot, headphone jack, master cable OBD connector, battery charger port
Connectivity	Wi-Fi: 802.11 b/g/n (2.4 GHz)
Dimensions	width: 322 mm, depth: 203 mm, height: 68 mm
Weight	2,9 Kg
Suggested temperature	storage: from -20°C to 50°C, operating device: from -5°C to 40°C
Certifications	 Smart Pro has been designed and manufactured in conformity with CE mark European standards and is CB and RoHS certified

## Smart Pro - Plus



Guided processes



Broadest vehicle coverage



Continuous software updates



Fast programming



Secure procedures



Integrated in MYKEYS Pro



Portable and stand-alone



POZW-DEPLIANT SMART-PRO-GB



8 003737 914017

# Silca Automotive

## ITALY AND OTHER COUNTRIES SILCA S.p.A.

Via Podgora, 20 (Z.I.)  
31029 VITTORIO VENETO (TV)  
Tel. +39 0438 9136  
Fax +39 0438 913800  
E-mail: [silca@silca.it](mailto:silca@silca.it)  
[www.silca.biz](http://www.silca.biz) - [www.silca.it](http://www.silca.it)

## GERMANY SILCA GmbH

Siemensstrasse, 33  
42551 VELBERT  
Phone: +49 2051 2710  
Fax +49 2051 271172  
E-mail: [info@silca.de](mailto:info@silca.de)  
[www.silca.de](http://www.silca.de)

## SPAIN SILCA KEY SYSTEMS S.A.

C/Santander 73A  
08020 BARCELONA  
Phone: +34 93 4981400  
Fax +34 93 2788004  
E-mail: [silca@silca.es](mailto:silca@silca.es)  
[www.silca.es](http://www.silca.es)

## FRANCE SILCA S.A.S.

12, Rue de Rouen  
Z.I. Limay-Porcheville  
78440 PORCHEVILLE  
Phone: +33 1 30983500  
Fax +33 1 30983501  
E-mail: [info@silca.fr](mailto:info@silca.fr)  
[www.silca.fr](http://www.silca.fr)

## BENELUX H. CILLEKENS & B.V.

Metaalweg, 4  
6045 JB ROERMOND  
Phone: +31 475 325147  
Fax +31 475 323640  
E-mail: [info@hillekens.nl](mailto:info@hillekens.nl)  
[www.hillekens.nl](http://www.hillekens.nl)

## UNITED KINGDOM SILCA LTD. & ADVANCED DIAGNOSTICS LTD.

Eastboro Fields  
Hemdale Business Park  
CV11 6GL Nuneaton  
Phone: +44 1293 531134  
E-mail: [sales@advanced-diagnostics.com](mailto:sales@advanced-diagnostics.com)  
[www.advanced-diagnostics.com](http://www.advanced-diagnostics.com)  
[www.silcald.co.uk](http://www.silcald.co.uk)



dormakaba Group